



WELLAND ACADEMY

Principal: Mrs J Anderson

Scalford Drive, Eastern Avenue
Peterborough PE1 4TR

Telephone: 01733 563180

Email: admin@wellandacademy.org

Website: www.wellandacademy.org

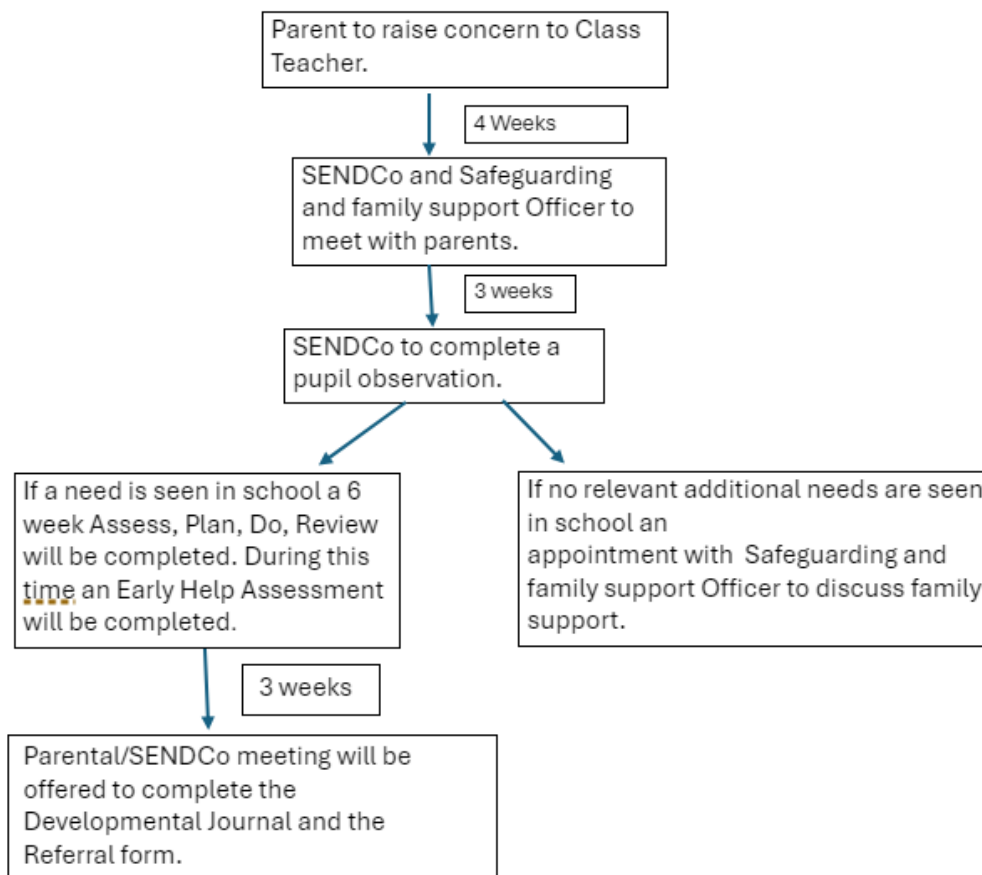
Twitter: @Wellandprimary

Dear Parent/Carer,

Thank you for your interest in the neuro development pathway. The referral process for a pediatric Neurodevelopmental assessment has changed. Schools need to provide information to evidence that they have been supporting your child to try to manage their symptoms. This is captured by using a graduated response, following a clear cycle of "Assess, Plan, Do, Review".

Please see [Peterborough Neuro + Flowchart Apr 24 \(cpft.nhs.uk\)](http://cpft.nhs.uk) for further information.

Please see below for Welland Academy's referral process. Please note these time scales are subject to change and refer to school weeks.



Parents can access the NHS 'Right to Choose' for an alternative diagnostic pathway. Please see the below information.

'Be Inspired'

One of the Greenwood Dale Foundation Trust Group of Academies



Right to choose route for ASD and ADHD referral via your GP.

1- Complete the relevant self-report questionnaire.

Please ensure you complete the correct form. You can complete it online or print it and complete it by hand. Referrals without the relevant completed questionnaire will not be accepted.

Autism age 4-11 questionnaire

[AQ-10 for children aged 4-11.pdf \(clinical-partners.co.uk\)](https://www.clinical-partners.co.uk/AQ-10_for_children_aged_4-11.pdf)

ADHD SNAP IV teacher and parent questionnaire

[SNAP IV Teacher and parent rating scale.pdf \(clinical-partners.co.uk\)](https://www.clinical-partners.co.uk/SNAP_IV_Teacher_and_parent_rating_scale.pdf)

2- Speak to your Local GP.

Book and attend an appointment with your GP to discuss the suspected condition. Make sure you take the completed self-report questionnaire with you.

3- Ask to be referred to Clinical Partners.

If your GP thinks an assessment is appropriate, ask to be referred to Clinical Partners under Right to Choose.

4- Your GP completes and submits the secure online form.

Ask your GP to complete the online form. All information will be handled securely and only used for clinical purposes. If your referral is accepted, you will be contacted regarding an appointment. If there are any issues with your referral, your GP will be contacted.

For further information please see the webpage below.

<https://www.clinical-partners.co.uk/nhs-services/right-to-choose>

Yours sincerely,

K Black

Mrs Black

(SENDco)

'Be Inspired'

One of the Greenwood Dale Foundation Trust Group of Academies

